

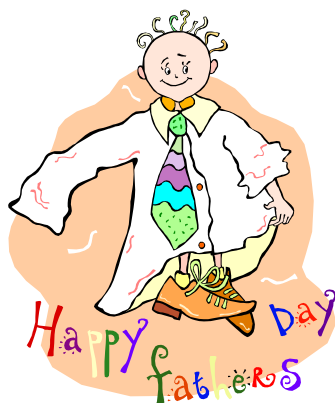
THE SPECTRUM

JUNE 2011



INSIDE THIS ISSUE:

UPCOMING EVENTS	2
ARC WALK	3
SUPPORT GROUPS	4
CALENDAR	5
FIRST STEPS	7
TRANSITION INFO	11
FREE BOWLING	12



THE TIME IS NOW!

We at ASC have a goal—to see every family who receives services from the Northeast Arc get involved in this year's ArcWalk. We are reaching out to ASC's families — if you have never participated in the Walk — the time is now. If you walk, you will be part of something very special. This is a very "doable" activity for families and children with disabilities because there are no time limits or expectations. It is about spending a day with family and friends to support an organization that does so much for so many. The Walk is also great for families with typically developing children to participate in as it gives children the opportunity to experience the diversity that they may not enjoy in their daily lives.

This Walk is not like any other; this Walk is about family, community and raising awareness while taking down walls of isolation for families who don't realize all that is available for them.

Be part of the fun—join our team and receive a cool visor!

Note: We don't have a name for the ASC team—but if you have a CLEVER suggestion please email us at asc@ne-arc.org. YOU COULD WIN 2 TICKETS TO WATER COUNTRY!! THE DEADLINE FOR THE NAMING CONTEST IS JUNE 4TH.

BE PART OF THE FIREWORKS!

BY BECKY LANDRY

Be part of the fireworks! Spark up your sneakers, your dancing shoes and strollers and join the Northeast Arc's 15th Annual Arc Walk & Family Celebration. The Arc Walk will take place during Family Festival week on Sunday, June 26th and will begin and end at Plains Park, behind the Holten Richmond Middle School in Danvers. Registration starts at 10:00 AM and the Walk kicks off at noon.

The Annual Arc Walk is about supporting friends, neighbors and the community while raising awareness about valuable programs and services for children and adults living with developmental disabilities such as Down syndrome, Autism, Aspergers, people who are deaf, blind, as well as our population of medically fragile individuals.

The goal this year is to raise \$50,000 to continue important programs and services. One of the ways the Arc can reach this goal is through needed sponsorships. We have many generous and wonderful sponsors who step up each year — including NMTW Commu-



(Cont'd on p. 13)

UPCOMING EVENTS AT ASC

LifeQuest Workshop Series:

The Journey to Adulthood for Individuals with Disabilities

Hear It From the Others

Tuesday, June 14th from 6:30 pm to 8:30 pm

6 Southside Rd, Danvers MA

Cost: \$5.00 per workshop

Time to wrap up the journey. Listen to the success stories of 3 families who have gone through transitioning, and learn about the pitfalls as well as the high points. Then network with families and join us for some light refreshments.

For more information, contact Aymee Lucifora at 978-624-2381 or by e-mail at alucifora@ne-arc.org

Grandparents' Brunch

The monthly support group for grandparents will celebrate the start of summer with an informal brunch at the regular meeting on June 20th from 10 to 11:30 am at 6 Southside Road, Danvers. The Grandparents' Group was formed to meet the unique needs of extended family members who may be the primary caregivers or who are in a more traditional role of grandparent. We come together to share resources and encouragement each month on the 3rd Monday of the month. To RSVP, contact Susan Gilroy at 978-624-2302 or sgilroy@ne-arc.org.

Annual PAPC-ASC Staff Retreat

On June 6th, 11 am–1 pm, the members of the Parent Advisory Policy Committee and ASC staff will get together for their annual retreat. The purpose of the meeting is to review the past year's activities, determine successes and where we can do better. The annual survey results are reviewed and plans for the upcoming year are formulated. New officers will be elected as well. For more info call Gloria Castillo at 978-624-2301 or Susan Gilroy at 978-624-2302.

End of the year Barbecue!

Participants of the Spanish-speaking support group in Lawrence are hosting an end of the year barbecue on June 16th from 11am to 1 pm. Location to be announced. For more information, contact Gloria Ricardi Castillo at 978-624-2301.

LIFE QUEST
*...a great
opportunity to
network with
other families,
your greatest
allies as you
proceed on
your journey.*

I walk to support others; because my neighbor is my friend; to share community spirit; to learn more about others; to

celebrate life; to raise understanding; because together, we
there are a million reasons
to participate. what's yours?

"i walk..."

can spend more; to provide services for others; because
be themselves; because
my family is fun; to create camaraderie; because the face-
painting can be silly; to share love with all ages and ca-
pabilities; to set an example that helping others also helps
ourselves; because it there's nothing better than a bright
summer's day walk; to support a good event paired with
a great cause; to support my friends; because I love my
family; to show community support; because I care; to cel-
ebrate the fireworks in all of us; to raise awareness; be-
cause we are capable for a better tomorrow; to support
valued programs and services; because I love to walk for a
great cause; to laugh with new friends; because I know how
much my walking means to others in the spirit of fun.

Sunday, June 26, 2011
12:00 p.m.

Holten-Richmond School
Plains Park, Danvers

For more information,
call (978) 762-4878

NortheastArc



and family celebration

ASC SUPPORT GROUPS

Acton

ASC Sponsored; Target Group: Mandarin-speaking parents.

Acton Memorial Library, 486 Main St (Rt. 27) Acton; bi-monthly meetings TBA

Parent facilitator: Wen Li

Contact ASC 978-777-9135 or asc@ne-arc.org

Danvers **SPECIAL BRUNCH**

ASC sponsored; Target Group: Grandparents

6 Southside Road, Danvers; 3rd Mondays, 10-11:30 am

Contact facilitator Susan Gilroy 978-624-2302 or email sgilroy@ne-arc.org

Danvers

ASC/AANE sponsored; Target Group: Adults (over 18) with Asperger's syndrome

6 Southside Road, Danvers; 3rd Wednesdays, 7-8:30 pm

Contact facilitator Gail Kastorf at 617-393-3824 ext. 42 or gail.kastorf@aane.org

Danvers

ASC/AANE sponsored; Target Group: Parents of Adults with Asperger's syndrome

6 Southside Road, Danvers; 2nd Tuesdays, 6:45-8:15 pm

Contact facilitator Gail Kastorf at 617-393-3824 ext. 42 or gail.kastorf@aane.org

Lawrence

ASC sponsored; Target Group: Spanish-speaking parents of children with disabilities

Greater Lawrence Family Health Center, 700 Essex St, Lawrence; 3rd Friday, 9:30-11:30am

Contact facilitator Gloria Castillo 978-624-2301 or gcastillo@ne-arc.org

Lowell

ASC sponsored; Target Group: Parents of children with ASD

DDS Lowell Area Office 325 Chelmsford St. Lowell; 1st Tuesday, 10:00 to 12:00

Contact facilitator Whitney Ryan 978-624-2305 or wryan@ne-arc.org

Newburyport

ASC sponsored; Target Group: Parents of children with ASD

Newburyport Public Library, 94 State St, Newburyport; 2nd Thursday, 6:30-8:30pm

Parent facilitator: Nancy Lucier

Contact ASC for more info 978-777-9135 or email ASC@ne-arc.org

Reading

ASC sponsored; Target Group: Parents of children with ASD

Location: EMARC, 34 Gould Street, Reading, Date to be determined: at 7pm

Contact parent facilitator Kim Gargano 781-526-9171 or kimgargs@yahoo.com

Lynn

Northeast Arc sponsored; Target Group: Parents of children with DD

Location: Lynn Public Library, 5 No. Common Street, Lynn; 10 am Date to be announced

Contact: Aymee Lucifora, Co-director, Family Resources 978-624-2381 or alucifora@ne-arc.org



Board

meeting:

June 6 @ 11

a.m. is the

next meeting

of ASC's

Parent

Advisory Policy

Committee

(PAPC).

Contact Susan

or Gloria at

978-777-

9135.

**Please join us for the Northeast Arc's
57th Annual Meeting and Awards Ceremony**



Sunday, June 5th
Danversport Yacht Club, Danvers MA

9:30AM

[Click here to purchase your tickets!](#)

Tickets will be available online until May 29th, 2011

JUNE 2011

SUN	MON	TUE	WED	THU	FRI	SAT
			1 Lowell group 10 am	2	3	4
5 NEArc Annual meet- ing	6 P APC-staff retreat 11 am	7	8	9 Newburyport group 6:30	10 ASC's BBQ to benefit the Walk	11
12 Swim	13	14 AANE Parents of adults w/ AS 6:45	15 AANE Adults w/AS 7pm	16 Spanish group 11 am Lawrence Barbecue	17	18
19	20 Grandpar- ents BRUNCH 10 am	21	22	23	24	25
26 ArcWalk	27	28	29	30		

Please see page 4 for support group details; see page 2 for workshop details.

NEW POTTERY CLASSES- FREE

The ArcWorks Community Art Center at 22 Foster Street, Peabody, MA is offering 2 6-week pottery program for teens and adults. Call Aymee Lucifora of the Family Support Center at 978-624-2381 to register or if you have questions regarding opportunity. This program is funded by the Department of Developmental Services.

6-Week Pottery Program For Teens Ages 13-18

Time: Thursday Evenings 3:30- 5:30 pm

Start Date: May 24, 2011, enrollment is open and on going Fee: There is no fee for this class

6-Week Pottery Program For Adults Ages 19+

Time: Thursday Evenings 6:00-8:00 pm

Start Date: May 24, 2011, enrollment is open and on going

Fee: There is no fee for this class

The programs will focus on hand-building and decorating techniques, combined with a variety of glaze treatments to create functional pottery and sculptural pieces. The program is open to individuals with developmental delays or Autism Spectrum Disorders. There is no charge for these programs. Class size is limited to 6.



SENSORY-FRIENDLY MOVIE

Join AMC Theatres and the Autism Society on June 4 for a special showing of *Kung Fu Panda 2*. We will be showing the movie at 10 a.m. local time in participating theatres nationwide. Locally Kung Fu Panda 2 will be shown at:

AMC **Dartmouth** Mall 12, 140 North Dartmouth Mall North Dartmouth, Mass. 02747

AMC **Framingham** 15, 22 Flutie Pass, Framingham, Mass. 17014

AMC **Tyngsboro** 12, 440 Middlesex Road Tyngsboro, Mass. 01879

AMC Loews **Methuen** 20, 90 Pleasant Valley St. Methuen, Mass. 01844

AMC Theatres (AMC) and the Autism Society have teamed up to bring families affected by autism and other disabilities a special opportunity to enjoy their favorite films in a safe and accepting environment on a monthly basis with the "Sensory Friendly Films" program.

In order to provide a more accepting and comfortable setting for this unique audience, the movie auditoriums will have their lights brought up and the sound turned down, families will be able to bring in their own gluten-free, casein-free snacks, and no previews or advertisements will be shown before the movie. Additionally, audience members are welcome to get up and dance, walk, shout or sing - in other words, AMC's "Silence is Golden®" policy will not be enforced unless the safety of the audience is questioned.

Tickets are \$4-6 depending on location and can be purchased on the day of the event.

OPEN HOUSE

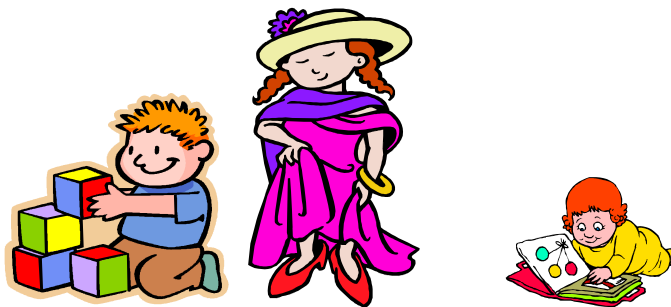
FIRST STEPS CHILD CARE CENTER

6 Southside Road Danvers, MA

Saturday, June 4, 2011

9:00-11:00 a.m.

Come and learn about our program and discuss enrollment opportunities for Infants, Toddlers and Preschool Age Children.



For more information please contact

Tina Denis, Director

(978) 624 - 2332

Tdenis@ne-arc.org

FIRST STEPS CHILD CARE CENTER: A PROGRAM OF
THE NORTHEAST ARC - UNITED WAY

CHANGING PERSPECTIVES-CHANGING LIVES

AANE's Third Annual Cape Cod Summer Conference for Educators, Professionals, and Parents with Brenda Smith Myles, Ph.D.

Changing Perspectives - Changing Lives:

Practical Solutions for Addressing the Behavior Needs of Individuals with Asperger Syndrome

When: Thursday, August 11, 2011

Where: Cape Codder Resort & Spa, 1225 Iyanough Road, Route 132 & Bearse's Way, Hyannis, MA

Morning Program: Hidden Curriculum - Unstated Social Rules

- Define the Hidden Curriculum.
- Explain the Hidden Curriculum's applicability to school, community, and home.
- Identify Hidden Curriculum areas and items across preschool, middle school, and high school.

Afternoon Program: Behavior Interventions

- Describe the cycle of tantrums, rage, and meltdowns.
- Identify interventions that can be used at each stage of the cycle.
- Discuss ways to prevent the cycle from occurring.

Conference Fee, Per Person: AANE member: \$110; Non-member: \$160 (includes new 1-year AANE membership/renewal) Register Online & Save! Continuing education fees additional and available for educators, social workers, SLP's and psychologists. You are a member of AANE if you have a current paid membership on file. Registration not accepted without correct fees enclosed. Conference fee includes coffee/continental breakfast at check-in and deli style lunch buffet. Registration Deadline: Advance registration with payment is required by August 4, 2011.

Please contact Robin Lurie-Meyerkopf for more information

robin.lurie-meyerkopf@aane.org 617-393-3824 x11

ELOPEMENT & WANDERING

IAN Research Report: Elopement and Wandering

People with autism spectrum disorders (ASDs) often "elope," "wander," or "bolt" from safe spaces. This behavior can be dangerous, and there have been many reports of fatalities, yet virtually no research has been focused on this subject.

Recognizing the urgent need for information and intervention, the Autism Research Institute, the Autism Science Foundation, Autism Speaks, and the Global Autism Collaboration partnered with the Interactive Autism Network (IAN) to create a national survey on elopement in ASD. So far, more than 800 families of children with ASDs from across the U.S. have completed the Elopement and Wandering Questionnaire launched on March 29, 2011. In this report, we share some initial findings, including the fact that nearly half of children with ASD between the ages of 4 and 10 engage in this behavior.

http://www.iancommunity.org/cs/ian_research_reports/ian_research_report_elopement

Elopement and Wandering Resources

[The Big Red Safety Box](#) - a set of elopement/wandering-related resources from the National Autism Association

[AWAARE Collaboration](#) - working to prevent wandering incidents and deaths in the autism community

AWAARE Collaboration's [Social Stories addressing Wandering](#)

Autism Speaks' [Autism Safety Project](#)

Autism Society of America's [Take Me Home](#) program

[Project Lifesaver](#) - provides in-depth training regarding wandering behavior and tracking technologies to law enforcement agencies

Examples of services available to help locate loved ones via "tracking" devices: [EmFinders](#), [LoJack SafetyNet](#), [Care Trak](#)

CAROL GRAY CONFERENCE

On July 18-19, 2011, **Carol Gray** will be presenting a two-day workshop at Framingham State University. Day one of this fun, fast-paced, hands-on workshop uses lecture, demonstration, discussion, activities, and practice of new skills to teach participants to develop Social Stories™. Carol Gray will also introduce Storymovies™. On day two, participants will examine the complexities of communication via the Internet and social media. Special attention will be paid to issues of bullying and ways to help people with autism spectrum disorders recognize and respond to a bullying attempt.

We encourage parents, grandparents, teachers, professional support personnel, administrators and others who support and work with people with autism spectrum disorders and other disabilities to attend. The registration fee is \$150, which includes a light breakfast and lunch each day and all workshop materials. The web site below provides more information and a link to the workshop registration form. Please feel free to share this information. Link: <http://www.framingham.edu/graduate-and-continuing-education/conferences/carolgray/index.html>

ADAPTIVE ROLLER SKATING

Adaptive Roller Skating Lessons

This skating program is specifically designed for children and teens with special needs.

If interested, you can also train for the Special Olympic Team!

This program meets each Saturday morning from 9:30 - 10:45 at the Saugus RollerWorld, 425R Broadway, Saugus, MA 01906 \$2.00 is the suggested donation, skate rental included (all donations are used to outfit our special olympians with roller skates)

Questions? Please contact Geraldine Finlay Email iskate49@aol.com

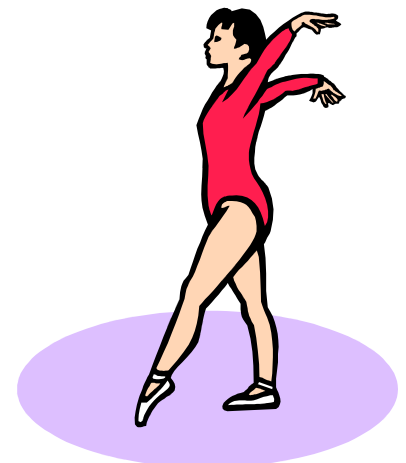
DANCE CLASS IN MIDDLETON

Highly recommended by one of ASC's families, the Helene Joy School of Dance in Middleton is accepting children for their summer dance program. The schedule is July 5th-August 25th.

WEDNESDAYS 4:00-4:45 Adaptive Dance (for children with Autism) ages 5+

THURSDAYS 4:00-4:45 Adaptive Dance (for children with Autism) ages 8+.

The fee is \$52 a month. Contact Helene for paperwork at <http://helenejoyschoolofdance.com/default.aspx>



EASTERSEALS WORKSHOPS

iDevices in the Schools: Communication and More!

Cost: \$75

Presenter: Kristi Peak-Oliveira and Jamie Mobed

June 6, 2011 Boston 9:30 am to 12:30 pm

June 30, 2011 Worcester 9:30 am to 12:30 pm

July 11, 2011 New Bedford 9:30 am to 12:30 pm

This workshop will take a look at iDevices and how they can be used to support students in their efforts to be successful communicators at school. We will discuss communication Apps as well as Apps that can be used to supplement the students' needs to promote successful interactions throughout the school day. We will talk about the importance of social closeness, and strategies for creating fun, meaningful exchanges between students and their communication partners. We will provide real-world examples, and there will be an opportunity for discussion, problem solving and idea sharing amongst the group.

Join the iCrowd! Get the most from your iPad/iPod

Cost:\$75

Presenter: Katrina Caracol-Parker

July 14, 2011 Boston 9:30 am to 12:30 pm

August 30, 2011 Worcester 9:30 am to 12:30 pm

Participants will learn skills required to use the iPod Touch and iPad devices effectively for organization, both in and out of the classroom. Our presenter will teach you the basic 'care and feeding' practices you need to get the most out of your iDevice. In addition, you will be introduced to several advanced tips and tricks such as creating an iTunes account without a credit card and working with touch screen, accessibility features, and motion controls. Learn about Apps that help individuals with learning disabilities develop and support independence in school, the workplace and everyday life. Participants will leave with a better understanding of how to navigate and thrive in the world of iDevices.

Check it Out: Ebooks, Audiobooks and Mobile Devices

Cost:\$50

Presenter: Catherine Bly

July 20, 2011 Boston 10:00 am to 12:00 pm

This presentation will introduce you to the various mobile devices on the market today for listening and reading books. We will discuss some popular ebook and audiobook book reader Apps like OverDrive, Read2Go, iBooks, Audiobooks, and Kindle. We will talk about the pros and cons of this medium and provide you a list of both children and adult ebook and audiobook sources. The objective of this workshop is for the attendee to gain a better understanding of the process involved in obtaining and reading and/or listening to these types of books.

Kurzweil 3000 Version 12

Cost:\$75

Presenter: Kristi Voelkerding

June 23, 2011 Worcester 9:30 am to 12:30 pm

Presenter: Jean K. Roches

June 28, 2011 New Bedford 9:30 am to 12:30 pm

This presentation will provide an overview of Kurzweil 3000's (vers. 12) reading, writing and study skills supports. All of the toolbars will be reviewed (Main, Reading, Study Skills and Writing). This is a hands-on opportunity to learn Kurzweil including such features as Translate, Brainstorm, Outline and Column Notes.

Questions? Contact Jeff McAuslin ,jmauslin@eastersealsma.org 800 244-2756 ext. 448

www.eastersealsma.org



TRANSITION MANUAL

Transitioning Teens with Autism Spectrum Disorders

This manual was inspired by the incredible tenacity and courage of all families who are supporting the growth and development of their children with Autism Spectrum Disorders.

With promising scientific research underway on autism, and many resources readily available to families of younger children, there is a decided lack of clear information and guidance available on the transition to adult living. This manual is intended to fill the gap by providing concise insight on the key considerations and timeline for this part of the journey.

We are optimistic that parents can embrace this material to constructively create a safe and meaningful context for their young adult's life. Further, we know that care providers, educators, community and government agencies are most responsive when families are knowledgeable and proactive advocates. We dedicate this manual to all who are contributing their expertise and compassion to meeting the needs of this diverse and growing population of young people.

Deirdre B. Phillips
Executive Director
Autism Consortium

<http://www.autismconsortium.org/empowering-families/transitioning-teens-with-autism-spectrum-diso-2.html>

THINK COLLEGE

Leaving high school is an exciting and tense time for students and their families. When considering what will happen next, the possibility of college is often in the mix. As family members of individuals with intellectual disabilities (also referred to as cognitive disabilities, cognitive impairments or formerly mental retardation), we may not know of the possibilities or be hesitant to encourage sons and daughters to consider attending college classes, at least initially. We weigh the risks against the benefits and end up with all kinds of questions about safety, supports, funding, transportation, and courses. While these are important questions to ask, such thoughts may create more concern than creativity, leading us to quickly lose sight of the many benefits of going to college <http://www.thinkcollege.net/for-families/for-families>



SEXUALITY, RELATIONSHIPS & ASPERGER SYNDROME CONFERENCE

Speaker: Dr. Isabelle Hénault, University of Quebec
When: Friday, June 10, 8:30 AM - 4:30 PM; Saturday, June 11, 8:30 AM - 12:00 PM
Where: LaCava Center at Bentley College in Waltham
Contact: Lisa Graffeo, Asperger's Association of New England

lisa.graffeo@aane.org (617) 393-3824 x10

AANE and MGH YouthCare are combining resources to address a poorly-understood aspect of living with Asperger Syndrome (AS). This unique conference will focus on sexuality, relationships, and the experiences of adults and adolescents with AS. The latest research and clinical applications will be presented by Dr. Isabelle Hénault. Instructional level of conference is advanced and the content and format are intended primarily for professionals who work with individuals living with AS. Those living with AS and parents of AS individuals are welcome. Click on link below for additional info and to register <http://events.r20.constantcontact.com/register/event?llr=b54cxzaab&oeidk=a07e3bg1tz5a4c218a6>

SAILING PROGRAM

The Universal Access Sailing Program at Community Boating Inc. in Boston. The address of the Community Boating boathouse is 21 David Mugar Way, Boston. However, the building is located by the Esplanade on the Boston side of the Charles River between the Hatch Memorial Shell and the Longfellow Bridge.

In the past four years this program, which caters to individuals with a range of physical and developmental disabilities, has been reaching out to members of the autism community. Last year nearly 20 regular members with autism spectrum disorder participated, and this summer we hope to expand our program even more. We are a sailing school at heart but have found incredible success in therapeutic boat-rides as well. Whether you are interested in learning the ropes or simply going for a relaxing boat-ride on the Charles River, we are happy to accommodate!

Community Boating Inc. differs from surrounding Accessible sailing programs in its welcoming of not only individuals with autism, but their family and friends as well. The fee for a membership is **\$1** for the member and only \$1 for each and all of his or her guests! This year, our program will open in the spring on May 2nd and will continue into early October. Each season offers sailing reservations seven days a week. Spring and Fall seasons will run from 1-5pm during the week and 10-3pm on the weekends. During the summer our program is open from 10-5pm on weekdays and 10-3pm on weekends.

To make a sailing reservation, please email Paul Bottom paulb@community-boating.org or the program director Marcin (marcin@community-boating.org) or call 617-523-1038 Ext. 24 . Please look at our website at www.community-boating.org or contact me personally if you have any further questions.



2 BOWLING PROGRAMS FOR NORTH SHORE FAMILIES

CANDLE PIN BOWLING for ADULTS

This introductory offer is free to adults serviced by the Family Resource Department of the Northeast Arc made possible with funding from the Department of Developmental Services. Includes bowling and shoe rentals.

Runs: Tuesdays May 10, 2011-June 24, 2011, 6:15pm-7:30pm

Location: Lucky Strike Lanes, 73 Buffum Street, Lynn, MA

FAMILY CANDLE PIN BOWLING

This introductory offer is free to families serviced by the Family Resource Department of the Northeast Arc made possible with funding from the Department of Developmental Disabilities.

Open to children, their siblings and their family members. Includes bowling and shoe rentals.

Program begins Friday May 13, 2011-June 24, 2011, 3:15pm-4:15pm

Location: Lucky Strike Lanes, 73 Buffum Street, Lynn MA.

NOTE: SPACE IS LIMITED, PRE-REGISTRATION IS REQUIRED, PARTICIPANTS MAY REGISTER ANY TIME DURING THE PROGRAM SESSION

Call the Aymee Lucifora of the Family Support Center at 978-624-2381 to register or if you have questions regarding this program opportunity.

FIREWORKS (CONT'D FROM PAGE 1)

nity Credit Union, Kelly's Roast Beef, The Kiwanis Club and NetRaffle.org.

The Arc Walk & Family Celebration is open to all families to enjoy live music, games, fun family activities and great food. There will be a moonbounce, spin art, face painting, dancing, clowns, ice cream and more. Lunch will be catered by Kelly's Famous Roast Beef and a variety of other goodies will be provided by many generous local stores and restaurants.

We still need sponsors, walkers and team captains. Call Becky Landry: (978) 762-4878 x 2401 to register your team or to inquire about sponsorships. Becky can help to set up a First Giving web page for your team. You can set up your own personal fundraising website by going to

<https://www.firstgiving.com/nearc/Event/Walk2011> Add your own spark to the Northeast Arc Walk! Call Becky Landry: (978) 762-4878 x2401

AUTISM SUMMER INSTITUTE

13th Annual Autism Summer Institute!

Dates: August 8-10, 2011, Time: 8:45am - 5:00pm

Location: [Crowne Plaza Nashua](#) 2 Somerset Parkway, Nashua, NH 03063 1.800.962.7482

Since 1999 the Institute on Disability (IOD) at the University of New Hampshire has presented the Autism Summer Institute (ASI), a conference for families, educators, community service providers, and self advocates. **The 2011 ASI theme is Everybody Reads, Everybody Writes, Everybody Has Something to Say.** This integrated literacy and communication theme recognizes that far too many students and adults with autism have not been provided with high-quality literacy instruction or with a means to communicate if their spoken voice is not effective. This theme will be addressed through four strands over the course of the three-day conference:

- A strand for parents and educators of young children in preschool through second grade;
- A strand for parents and educators of students third grade through high school;
- A first-ever strand specifically for autistic adolescents and young adults (organized by the Autistic Self-Advocacy Network); and
- A contemporary topics strand offering a variety of topics representing current and emerging issues

KEYNOTE PRESENTERS

- Drew Goldsmith, Nick Holzthum, & Taylor Brown, I am Norm student advocates
- Christi Kasa, Ph.D., University of Colorado
- Paula Kluth, Ph.D., consultant, author, & advocate
- Scott Michael Robertson, Autistic Self-Advocacy Network
- DJ Savarese, student & self-advocate
- Donna Williams, author, artist, & self-advocate
- Therese Willkomm, Ph.D., ATP, University of New Hampshire

WHO SHOULD ATTEND

The ASI is designed for and will benefit individuals with ASD, educators, parents, paraprofessionals, school administrators, guidance counselors, related services providers, psychologists, university students, educational teams including families, and others interested in creating more inclusive opportunities for students with ASD.

Registration Fees: Professional: \$399; Students / Parents /Self-Advocates: \$349;Single Day: \$150 each

Register
Online

Download
Brochure

Name the ASC
Walk Team!
Winner will
receive 2
tickets to
Water Country.
Send your idea
to asc@ne-arc.org by
June 4th.

Check our website!

www.NE-arcAutismSupportCenter.org

AUTISM SUPPORT CENTER

Center for Developmental Excellence
6 Southside Road
Danvers, MA 01923

Phone: 978-777-9135
E-mail: asc@ne-arc.org



The Autism Support Center is celebrating 20 years of supporting and empowering families in northeastern Massachusetts.

THE SPECTRUM

The Spectrum is a monthly electronic publication of the Autism Support Center:

6 Southside Road
Danvers, MA 01923

978-777-9135 or 800-7-AUTISM (in Eastern MA)

E-mail: asc@ne-arc.org

www.ne-arc-autism-support-center.org

This newsletter is published to inform parents and professionals of resource information, upcoming events, and other autism-related topics. ASC is funded primarily by

the Mass. Dept. of Developmental Services. The views expressed do not necessarily reflect those of the funding source. ASC does not endorse any product, service or theory referred to in this newsletter. Articles, resources and announcements are included for information only.

Anyone wishing to contribute information for this newsletter should send it to asc@ne-arc.org or to our mailing address above. Parent contribu-

tions are encouraged. *Announcements are included as space is available.*

NEWSLETTER STAFF

Susan Gilroy, Editor

Contributors:

Gloria Ricardi Castillo

Scott Buchanan

Whitney Ryan

Stephanie Gammons



NortheastArc
Life-Long Support for People with Disabilities

